

RESIDENCE K-G06
GROUND &
LOWER GROUND

COURT TERRACE

2 BEDROOMS
2 BATHROOMS
1 STUDY

INTERNAL: 80 m²
EXTERNAL: 30 m²
TOTAL: 110 m²

BABYLON
41 TERRY ROAD, ROUSE HILL
WWW.BABYLON.SYDNEY

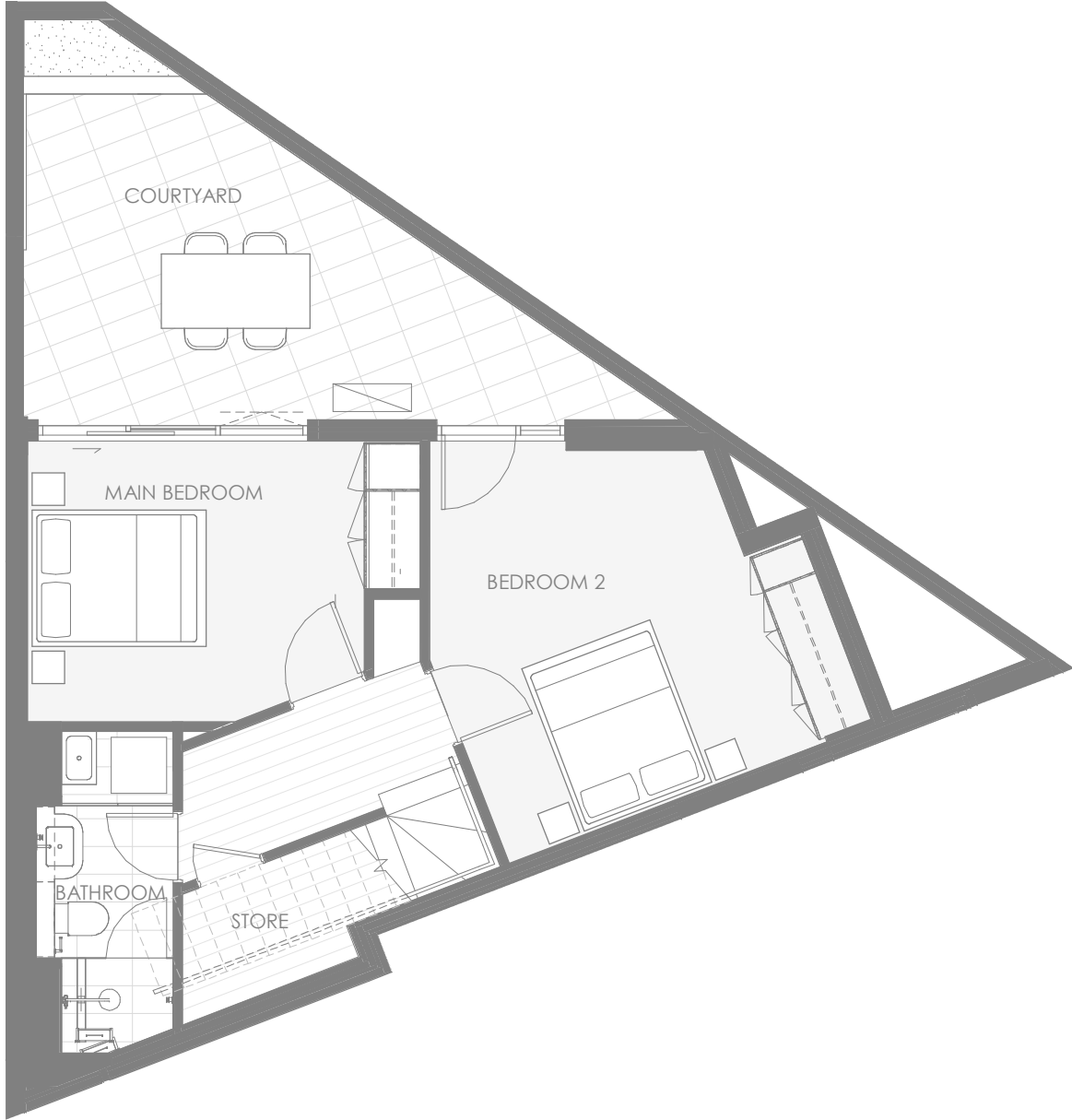
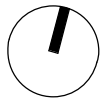
DEVELOPED BY DENVELL GROUP
DESIGNED BY ROTHELOWMAN
LANDSCAPE BY TURF DESIGN

BABYLON

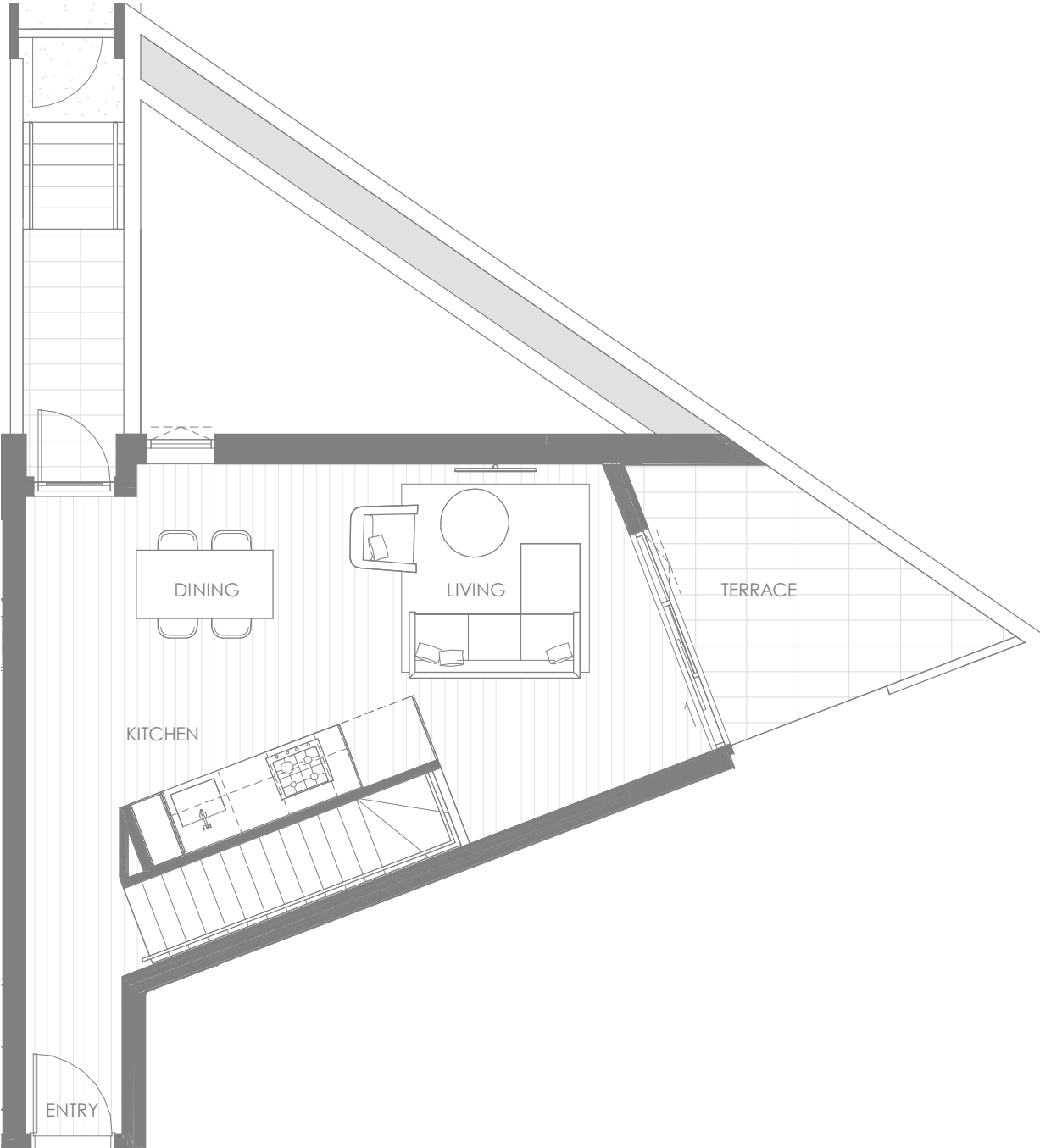
1 CARPARK
STREET VIEW
NORTH ASPECT
DOUBLE STOREY

PRIVATE STORAGE
PRIVATE ENTRY
PRIVATE GARDEN

SALES GALLERY
1300 899 866
SHOP 6 409 VICTORIA AVE
CHATSWOOD



LOWER FLOOR



UPPER FLOOR

